

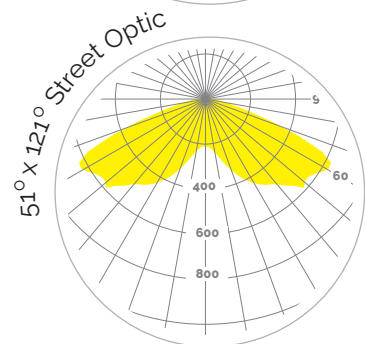
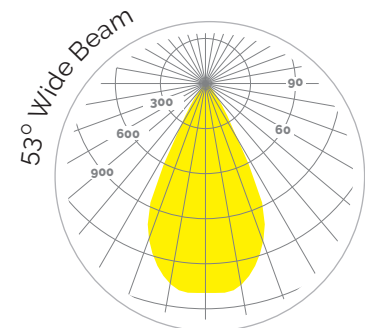
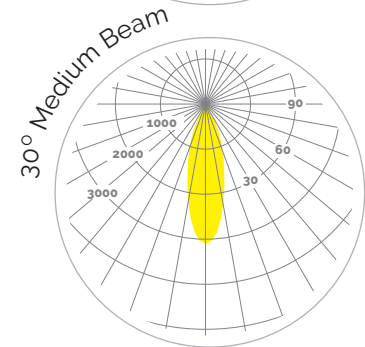
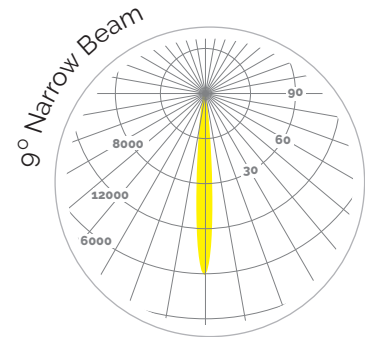


## Monospot 3

High Power LED Floodlight

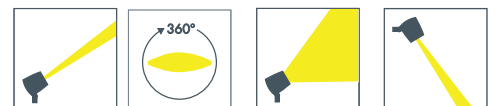


High performance floodlight with innovative technology and design plus a wide range of light distributions



### FEATURES

- Full range of light distributions from 9° narrow beam to 53° wide beam plus linear beam spreads
- Vario optic allows for beam angle adjustment between 11°-48° while fixture is installed and operating
- 1 x 28W high performance LED
- Integral driver at 120-277V AC input voltage
- External dimming driver available. Consult factory for details.
- Up to 3391 Lumen output
- Up to 86 Lumens/Watt efficacy
- Mounting options include mounting bracket, pole mount, and stainless steel earth spike
- IP67 & IK08 Rated



MONO-3

# ORDERING

MONO3 | 28 | | | | |

PRODUCT	POWER	LED COLOR	OPTICS	CONTROL	FINISH	MOUNTING	ACCESSORIES
<b>MEYER</b> Monospot 3 LED Floodlight	<b>28</b> 1 x 28W LED	<b>830</b> 3000K White  <b>840</b> 4000K White	<b>VAR</b> 11°-48° Vario Optic  <b>009</b> 9° Narrow Beam  <b>36H</b> 9° x 36° Horizontal Linear Beam  <b>36V</b> 36° x 9° Vertical Linear Beam  <b>36R</b> 36° x 9° Rotatable Linear Beam  <b>030</b> 30° Medium Wide Beam  <b>053</b> 53° Wide Beam  <b>STO</b> 51° x 121° Street Optic <sup>1</sup> with bat-wing distribution  <b>ASY</b> Asymmetrical	<b>N</b> Non-Dim  <b>D</b> 0-10V Dimming	<b>B</b> Black  <b>W</b> White  <b>S</b> Silver <sup>2</sup>  <small><sup>2</sup> Premium color</small>	<b>B</b> Mounting Bracket <sup>3</sup>  <b>P</b> Pole Mount  <small><sup>3</sup> Included Standard</small>	<b>MONO3-PG</b> Prismatic Glass <b>MONO3-HL</b> Honeycomb Louver <b>MONO3-ES</b> Earth Spike <b>MONO3-RL</b> Radial louvre <b>MONO3-CO-(x)</b> Cowl  <small>(x) - Finish</small>

<sup>1</sup> Street Optic only available with Pole Mount  
Street Optic not available with dimming

## CONSTRUCTION

- Corrosion-resistant die cast aluminum housing with polyester powder coat finish
- All exterior steel parts are stainless steel
- Tempered safety glass, silicon gasket
- Closure by 3 stainless steel screws
- 180° tilt range
- M20 Cable gland

## SIZE AND MOUNTING

- Unit size: 6.89" diameter x 7.88" depth
- Mounting Bracket has 180° tilt range
- Pole Mount has 90° tilt range and 360° swivel range
- Weight = 7.72 lbs (3.5 kg)

## LEDS

- 1 x 28W high performance LED module in 3000K and 4000K
- Consult factory for 2700K or other color temperatures
- 80+ CRI

## COMPLIANCE

- ETL Listed
- IP67 and IK08 Rated

## ACCESSORIES

- Radial Louvre, Prismatic Glass Lens, Honeycomb louvre and Cowl
- Vario optic allows for beam angle adjustment between 11°-48° while fixture is installed and operating
- Linear rotatable beam option equipped with external ribbed glass spreader lens allowing continuously adjustable beam through 360° from outside the luminaire

## ELECTRICAL

- Integral Driver at 120-277V AC input voltage
- Power Consumption: 28W
- External dimming driver available. Consult factory for details.
- Factory prewired gft wire whip

## FINISHES

- Polyester powder coat in Black, White, and Silver <sup>2</sup>

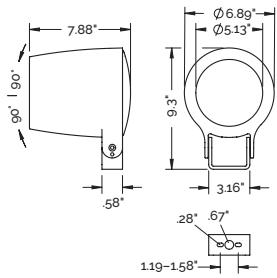
<sup>2</sup> premium

## WARRANTY

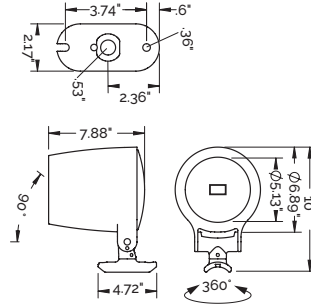
- 3 year limited warranty.
- Complete warranty terms available at [thelightingquotient.com](http://thelightingquotient.com)

# MOUNTING

## WITH MOUNTING BRACKET



## WITH POLE MOUNT

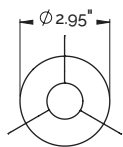


# ACCESSORIES

## RADIAL LOUVRE

to reduce lateral glare

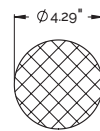
- Internal, factory installed



## PRISMATIC GLASS LENS

for diffused light distribution

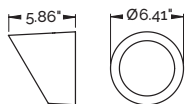
- Internal, factory installed



## COWL

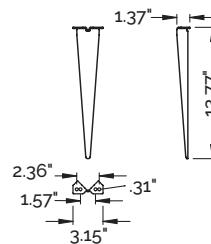
Stainless steel, to avoid lateral glare

- External, installed in the field



## EARTH SPIKE

Stainless steel, for use in landscape lighting



## HONEYCOMB LOUVER

Internal factory installed, to avoid glare

