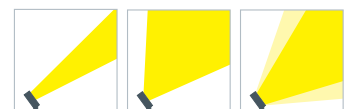
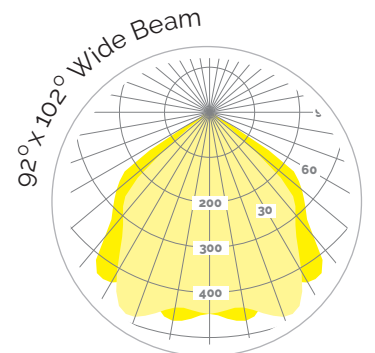
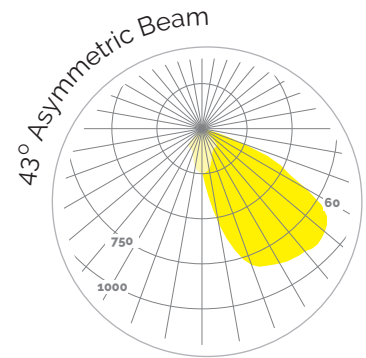
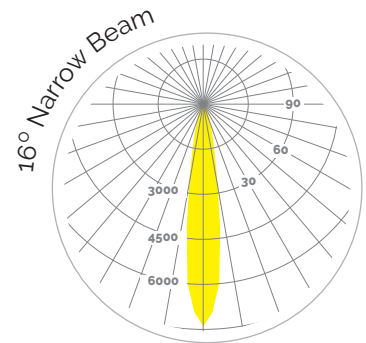
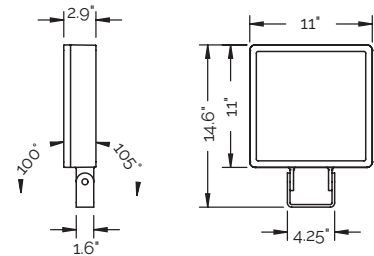




Superlight LED 3 High Performance Floodlight



High performance floodlight with efficient reflectors ideal for area lighting, accenting facades, and floodlight applications



FEATURES

- Sleek, unobtrusive design allows integration into any style of architecture
- Optimal heat management ensures longevity of the LEDs
- Symmetric and asymmetric wide beam reflectors are ideal for area lighting while rotationally narrow beam reflectors are ideal for accent lighting facades
- 2 x 45W high performance LED
- 55W high performance LED for comfort optic only
- Integral driver at 120–277V AC input voltage
- Up to 10293 Lumen output
- Up to 107 Lumens/Watt efficacy
- IP67 and IK08 Rated

MSL3

ORDERING

MSL3 - - - - -

PRODUCT	POWER	LED COLOR	OPTICS	CONTROL	FINISH	MOUNTING	ACCESSORIES
MEYER Superlight LED 3 Floodlight	90 2 x 45W LED	830 3000K White	16 16° Narrow beam	N Non-Dimming	B Black	B Mounting Bracket ³	MSL3-CO-(x) Cowl MSL3-BD-(x) Barn Doors MSL3-VL-(x) Vertical Louver MSL3-HL Honeycomb Louver MSL3-RB Ribbed glass (x) = finish
	55 55W LED (comfort optic only)	840 4000K White	43 43° Asymmetric beam 92 92° x 102° wide beam CO 16° Comfort Optic	D 1-10v Dimming	W White S Silver ² ² Premium color	W Wall Arm P Pole Mount ³ Included Standard	

CONSTRUCTION

- Die cast aluminum housing, polyester powder coat finish
- All exterior steel parts are stainless steel
- High transmission safety glass, silicon gasket
- High efficiency reflector
- Cable gland
- M20 cable gland

SIZE AND MOUNTING

- Unit size: 11"H x 11"W x 2.9"D
- Included Mounting Bracket - 4.25"
- 33.7" Wall Arm, 42" Overall
- Weight = 12.8 lbs. (5.8kg)

LEDS

- 2 x 45W high performance LED in 3000K and 4000K
- 55W high performance LED in 3000K and 4000K

COMPLIANCE

- IP67 & IK08 Rated
- ETL Listed
- * LM79 Tested, LM70 (50,000 hours)

ELECTRICAL

- Integral Driver at 120-277V AC Input voltage
- Power Consumption: 90W, 55W (comfort optic only)
- External dimming driver available.
Consult factory for details
- Factory prewired 9ft wire whip

ACCESSORIES

- Accessories include: Cowl, Barn Doors, Vertical Louver, Honeycomb Louver and Ribbed glass

FINISHES

- Polyester powder coat in Black, White, and Silver ²

² premium

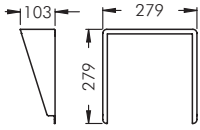
WARRANTY

- 3 year limited warranty.
Complete warranty terms available at
thelightingquotient.com

ACCESSORIES

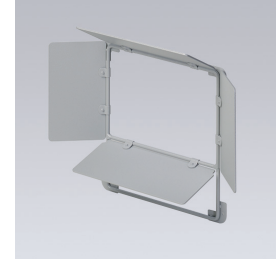
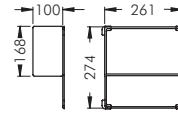
COWL

Stainless steel, to avoid glare



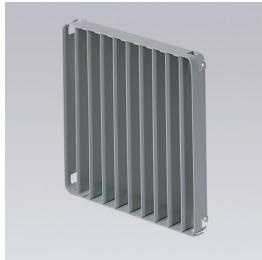
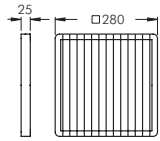
BARN DOORS

Aluminum, to avoid glare



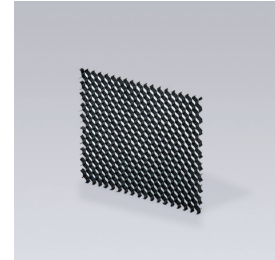
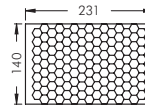
VERTICAL LOUVER

Stainless steel, to avoid glare



HONEYCOMB LOUVER

Internal accessory, to avoid glare



RIBBED GLASS

Internally fitted, for linear beam control, continuously adjustable 360°

