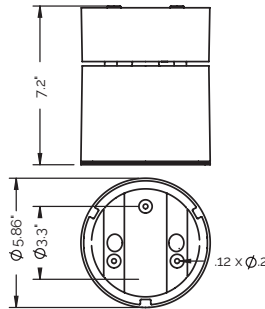




Surface-mounted Downlight

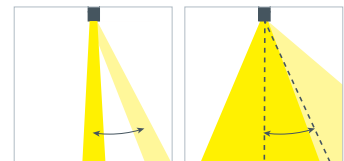
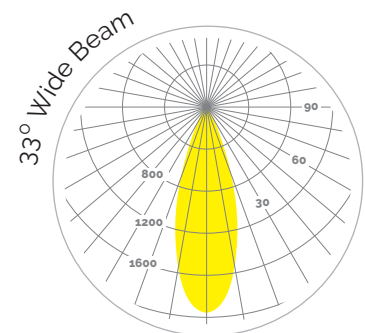
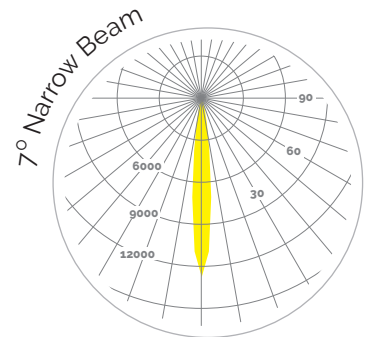


The LED surface mounted downlights are very compact and shallow in design

MSMDL

FEATURES

- Full range of optics from 7° narrow beam to 33° wide beam to 46°/6° linear beam
- 25W high performance LED
- Up to 837 Lumen output
- Up to 64 Lumens/Watt efficacy
- Integral driver at 120V AC Input voltage
- IP65 and IK08 Rated



ORDERING

MSMDL				N	
PRODUCT	POWER	LED COLOR	OPTICS	CONTROL	FINISH
MEYER Surface-mounted Downlight Luminaire	13 13W LED 25 25W LED (medium wide beam only)	830 3000K White 840 4000K White	07 7° Narrow Beam 31 31° Medium Wide beam 33 33° Wide Beam 6L 46° x 6° Linear beam spread	N Non-Dim	B Black W White S Silver ¹ ¹ Premium color

CONSTRUCTION

- Die-cast aluminum housing, polyester powder finish
- All exterior steel parts are stainless steel
- Tempered safety glass, silicon gasket
- Gimbal with 0–15° tilt range

ELECTRICAL

- Integral Driver at 120V AC Input voltage
- Power Consumption: 13W
- 25W LED (medium wide beam only)

SIZE AND MOUNTING

- Luminaire size: 7.2"H x 5.86" diameter
- Weight = 4.41 lbs (2 kg)

LEDS

- High performance LED in 3000K or 4000K

FINISHES

- Polyester powder coat in Black, White, and Silver¹

¹ premium

COMPLIANCE

- ETL Listed
- IP65 and IK08 Rated
- * LM79 Tested, LM70 (50,000 hours)

WARRANTY

- 3 year limited warranty.
- Complete warranty terms available at thelightingquotient.com