



Superlight LED 1

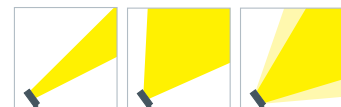
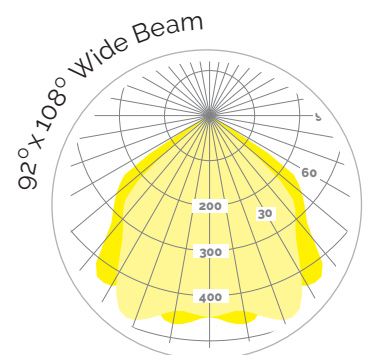
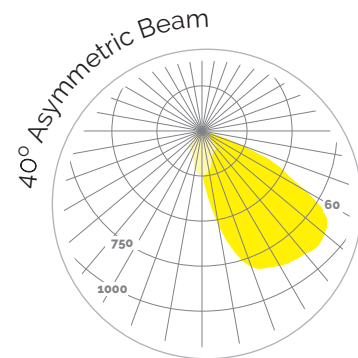
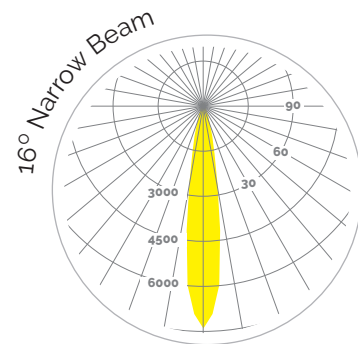
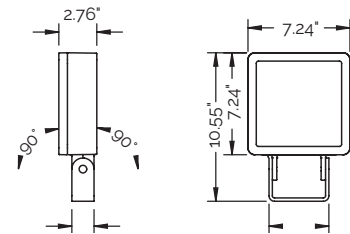
High Performance Floodlight



High performance floodlight with efficient reflectors ideal for area lighting, accenting facades, and floodlight applications

FEATURES

- Sleek, unobtrusive design allows integration into any style of architecture
- Optimal heat management ensures longevity of the LEDs
- Symmetric and asymmetric wide beam reflectors are ideal for area lighting while rotationally narrow beam reflectors are ideal for accent lighting facades
- 1 x 27W high performance LED
- Integral driver at 120–277V AC input voltage
- External dimming driver available. Consult factory for details
- Up to 3056 Lumen output
- Up to 113 Lumens/Watt efficacy
- IP67 and IK08 Rated



MSL1

ORDERING

| | | | | | |
|-------------|-----------|--|--|--|--|
| MSL1 | 27 | | | | |
|-------------|-----------|--|--|--|--|

| PRODUCT | POWER | LED COLOR | OPTICS | CONTROL | FINISH | MOUNTING | ACCESSORIES |
|---|--------------------------|--|---|---|--|---|---|
| MEYER Superlight LED 1 Floodlight | 27 1 x 27W LED | 830 3000K White 840 4000K White | 16 16° Narrow Beam 40 40° Asymmetric beam 92 92°/108° Wide beam | N Non-Dim ¹ ¹ Consult factory for dimming options | B Black W White S Silver ² ² Premium color | B Mounting Bracket ³ W Wall Arm P Pole Mount ³ Included Standard | MSL1-CO-(x) Cowl MSL1-BD-(x) Barn Doors MSL1-VL-(x) Vertical louver MSL1-HL Honeycomb louver MSL1-RB Ribbed glass (x) = finish |

CONSTRUCTION

- Die cast aluminum housing, polyester powder coat finish
- All exterior steel parts are stainless steel
- High transmission safety glass, silicon gasket
- High efficiency reflector
- 180° tilt range
- M20 Cable gland

ELECTRICAL

- Integral driver at 120–277V AC Input voltage
- Power Consumption: 27W
- External dimming driver available.
Consult factory for details
- Factory prewired 9ft wire whip

SIZE AND MOUNTING

- Extremely Compact — 7.24H" x 7.24W" x 2.76"D
- Included Mounting Bracket — 4.25"
- 33.7" Aluminum Wall Arm, 41" Overall
- Weight 5.29 lbs (2.40kg)

ACCESSORIES

- Accessories include: Cowl, Barn Doors, Vertical Louver, Honeycomb Louver, Ribbed Glass

LEDS

- 1 x 27W high performance LED in 3000K and 4000K

FINISHES

- Polyester powder coat in Black, White, and Silver ²
² premium

COMPLIANCE

- IP67 & IK08 rated
- ETL listed
- LM79 Tested, LM70 (50,000 hours)

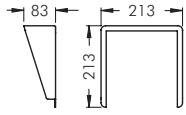
WARRANTY

- 3 year limited warranty.
Complete warranty terms available at
thelightingquotient.com

ACCESSORIES

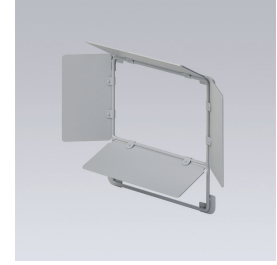
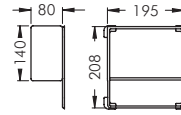
COWL

Stainless steel, to avoid glare



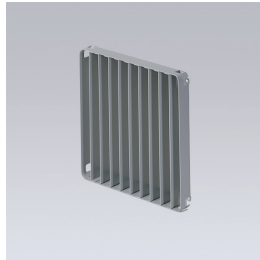
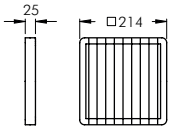
BARN DOORS

Aluminum, to avoid glare



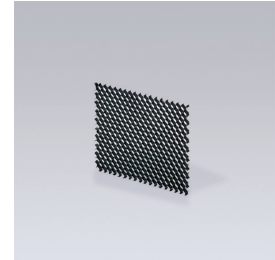
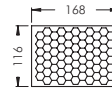
VERTICAL LOUVER

Stainless steel, to avoid glare



HONEYCOMB LOUVER

Internal accessory, to avoid glare



RIBBED GLASS

Internally fitted, for linear beam control, continuously adjustable 360°

